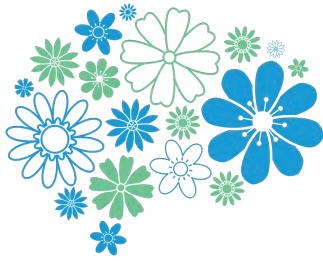




23rd annual Community Mental Health Conference



# Neurodiverse Brains: Understanding Differences, Empowering Potential

**Saturday, May 17, 2025 | 9 a.m. – 5 p.m.**

Evanston Township High School, 1600 Dodge Ave. Evanston



Debra Vines  
Panelist



Samantha Kolkey, LCSW  
Panelist



Jennifer Gerlach, LCSW  
Panelist



Natalie LaDuke, PhD  
Moderator

Join us for a conversation that will challenge assumptions, spark new ideas,  
and celebrate the power of diverse minds!

## Conference Schedule:

- 1 **9 - 10am** Registration/Continental Breakfast/ Exhibit Hall/Poster Presentations
- 2 **10am - 12pm** Panel Presentation
- 3 **12 - 1pm** Lunch/Exhibit Hall/Poster Presentations

- 4 **1 - 4:30pm** Breakout Sessions (3 rounds)
- 5 **4:30 - 5pm** Networking Reception

**In person tickets start at \$15**  
**Up to 5 CE/CEU/PCD available**  
(APA, ILDFPR, ISBE, SHRM)



Learn More  
**Register Now!**

**Can't join in person?**

Register to view our panel presentation via free livestream.



**American Foundation for Suicide Prevention**

Illinois



Thank you to our sponsors